

מעדלי

# Beth Elohim Medley

Bass

With energy (♩ = 104)

**A**

הללו - כל הנשמה  
Hallelu - Kol Haneshama

1.

2.

Fine

**B**

Cm B♭ Cm Gm Cm



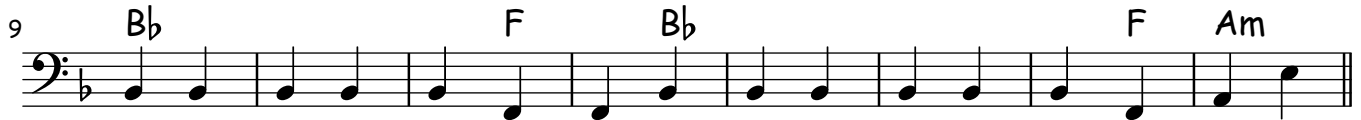
D.S. al Coda



Rhythmically (♩ = 100)

מים מים  
Mayim, Mayim

Dm F A Dm Gm Am Dm



With fervor (♩ = 120)

עם ישראל חי  
Am Yisrael Chai (Rockoff)

**A**

1.

2.



(♩ = 96)  
אור זרוע  
Or Zarua

Em C A Em C A Em C D Em C A Em C A Em C A Em C A Em

9 G D C D C D Em G D C D C D Em

17 G D C D C D Em G D C D C D Em C A Em

The bass line for 'Or Zarua' is written in 4/4 time with a key signature of one sharp (F#). It consists of three staves of music. The first staff contains measures 1-8, the second staff contains measures 9-16, and the third staff contains measures 17-24. The music features a steady eighth-note bass line with occasional rests and a final measure with a whole note rest.

Joyously (♩ = 112)  
ישמחו השמים  
Yismechu Hashamayim

Dm A<sup>7</sup> Dm C<sup>7</sup> F D<sup>7</sup> Gm A<sup>7</sup>

1. Fine B 2. D.C. al Fine

8 A<sup>7</sup> Dm B<sup>b</sup> C Dm B<sup>b</sup> C Dm Gm<sup>7</sup> A<sup>7</sup> Dm A<sup>7</sup> Dm

The bass line for 'Yismechu Hashamayim' is written in 4/4 time with a key signature of one flat (Bb). It consists of two staves of music. The first staff contains measures 1-7, and the second staff contains measures 8-14. The music features a steady eighth-note bass line with occasional rests and a final measure with a whole note rest. There are first and second endings indicated by bracketed numbers 1 and 2.