

טום-באלאלייקע Tum-Balalayke

Lead Sheet

Traditional
Arr. Dick Schoeller

Moderato (♩ = 100-120)

Capo
3rd fret

Fm

(Dm)

G⁷(E⁷)

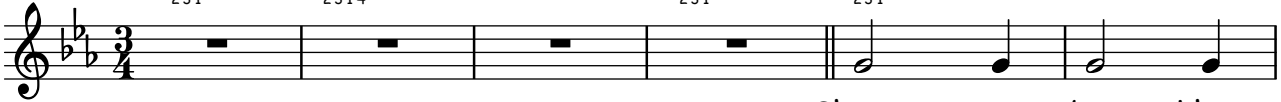
Cm

(Am)

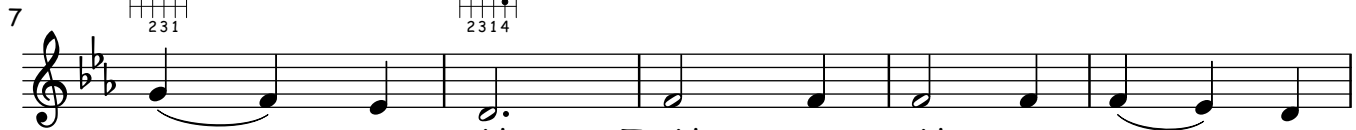


Cm

(Am)



Shteyt a bo- kher
Mey- dl, mey- dl,
Nar- ish- er bo- kher,

Cm
(Am)G⁷
(E⁷)

un er trakht, Trakht un trakht a gan- tse
kh'vil bay dir fregn: Vos ken vaks- n, vaks- n on
vos darfs- tu fregn? A shteyn ken vaks- n, vaks- n on

Cm
(Am)Cm⁷
(Am⁷)A_b
(F)E_b
(C)

nakht, Vem- en tsu nem- en un nisht far- shem- en,
regen? Vos ken bren- en un nisht oyf- her- n?
regen; Lib- e ken bren- en un nisht oyf- her- n;

Fm
(Dm)G
(E)Cm
(Am)

Vem- en tsu nem- en un nisht far- shem- en.
Vos ken benk- en, veyn- en on trer- n?
A harts ken benk- en, veyn- en on trer- n.

Chorus

21 Cm (Am) G⁷ (E⁷)
 Tum- ba- la, tum- ba- la, tum- ba- la- lay- ke,

25 G⁷ (E⁷) Cm (Am)
 Tum- ba- la, tum- ba- la, tum- ba- la- lay- ke,

29 Cm (Am) Cm⁷ (Am⁷) A^b (F) E^b (C)
 Tum- ba- la- lay- ke, shpil, ba- la- lay- ke,

33 Fm (Dm) G⁷ (E⁷) Cm (Am) D.S.
 Shpil, ba- la- lay- ke, frey- lekh zol zayn!